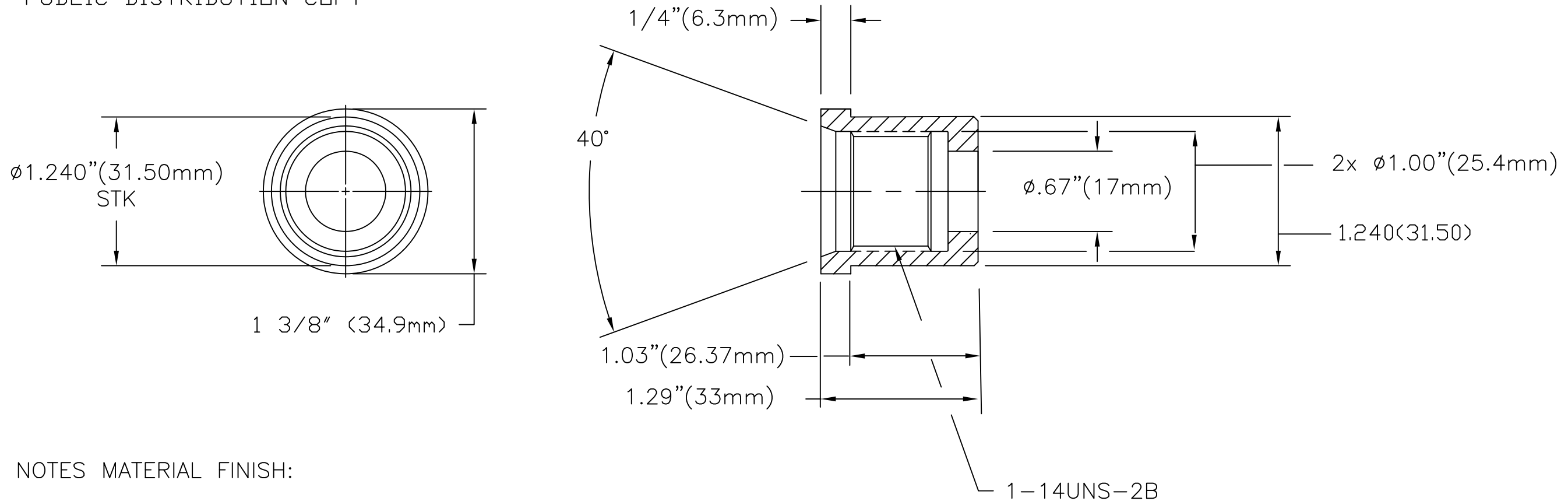


HDDJETNOZZLE.COM

SERIES 65 SOCKET
SHOULDER DROP-IN (WELD)

PUBLIC DISTRIBUTION COPY

NO	REQD	MATERIAL	SH
1.	1	STL C-1020 ASTM LOW CARBON STEEL	
2.	1	STL TBG AISI 1045 ALLOY STEEL	
3.	1	STL TBG A-516 C-1026 ALLOY STEEL	
4.	1	SSTL 316 STAINLESS STEEL	



NOTES MATERIAL FINISH:

1. APPLY HOT BLACK OXIDE FINISH PER ASM 2485 WITH A HOT OIL FINISH AND RINSE TO MATERIAL 1,2,3.

2. MATERIAL-4 (SSTL) NATURAL FINISH (NO FINISH) REMOVE BURRS & SHARP EDGES.

Copyright © 2014 Cherrington LLC All Rights Reserved Notification of Proprietary Design & Data This material embodies confidential or proprietary information which is the property of Cherrington LLC of Cheyenne , Wyoming, USA and which shall not be produced in any manner, stored in any databank or retrieval system, disclosed to others were used in whole or in part to copy and reproduce the reference part without express written consent of the property owner as referenced.

REV	DATE	REVISION DESCRIPTION	BY	CHK'D	APP.
PREPARED FOR General Distribution Copyright notices apply		JET SOCKET 65 SERIES SHOULDER-DROP-IN-PD			
DATE:	21JUN23	DRAWN BY:	WDC	CHKED BY:	WDC
		APPRVD BY:			
		REVISION:	NC	SCALE:	1/1
		SHEET:	1	OF	1
		SHEET SIZE:	B	FILE NAME:	S65-SHOULDER-DROP-IN-PD
		DWG NO.	5720-0138-SDI-1NC		
UNLESS OTHERWISE SPECIFIED DEMINSIONS ARE IN INCHES. TOLERANCES ARE: X. ± .020 .X ± .015 .XX ± .010 ANGLES ±1° .XXX ± .003 FRACTIONS ±1/16					